

Eclipse™ #2

Post Hydrant

NON-FREEZING



- New full-port nozzle
- One or two nozzles
- Any size you wish up to 2½" NST

Available with any depth of bury you desire →

Inlet can be 2", 2½" or 3" iron pipe. Mechanical joints 2", 3" and 4" also available →



← You can replace interior parts without disturbing any connections. Just unbolt the top cap and withdraw the inside working parts

← All hydrants now furnished with a 14mm fusion-bonded epoxy coated steel stand pipe both internally and externally to provide superior corrosion resistance

← Has 2 - 3/16" valve opening

↳ DRAIN

2511 North 9th Street
St. Louis, MO 63102



800-231-3990
www.hydrants.com
info@hydrants.com

THE EASIEST TO SERVICE



UNDO 4 BOLTS



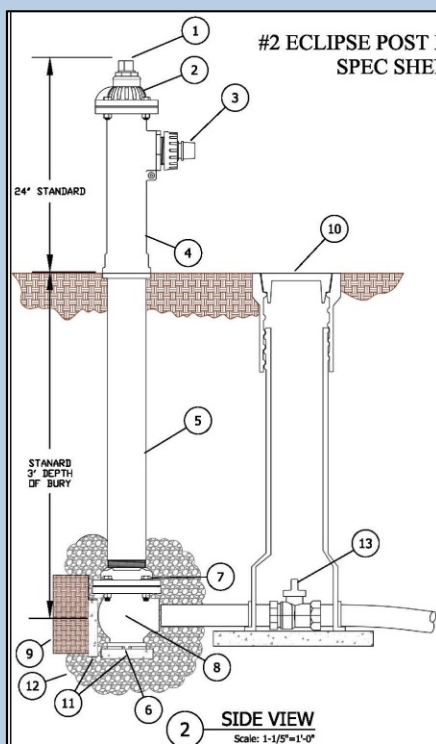
PULL UP TOP CAP



PULL OUT ROD



INSPECT PLUNGER



#2 ECLIPSE POST HYDRANT SHALL BE SELF-DRAINING, NON-FREEZING, COMPRESSION TYPE WITH 2-3/16" MAIN VALVE OPENING. INLET CONNECTION SHALL BE (2" FIP, 2-1/2" FIP, 3" FIP, 2" MJ, 3" MJ OR 4" MJ). OUTLET SHALL BE (1-1/4", 1-1/2", 2" OR 2-1/2" IP OR NST). STANDARD DEPTH OF BURY IS 3'. ALL WATER FLOW SHALL PASS THRU A 3-1/2" FBE COATED STEEL PIPE AND CAST IRON TOP STOCK WATERWAY. ALL WORKING PARTS SHALL BE SERVICEABLE FROM ABOVE GROUND WITH NO DIGGING OR REPLACEMENT NEEDED. HYDRANT SHALL BE SET IN 4 CUBIC FEET OF CRUSHED STONE TO ALLOW FOR PROPER DRAINAGE OF HYDRANT. RECOMMENDATION OF THE AWWA SHOULD BE FOLLOWED WHEN INSTALLING THE HYDRANT. THE #2 ECLIPSE POST HYDRANT AS MANUFACTURED BY THE KUPFERLE FOUNDRY, ST. LOUIS MO. 63102 OR APPROVED EQUAL.

NOTES:
THE #2 HYDRANT
INLET SHALL BE: _____
OUTLET SHALL BE: _____

#2 ECLIPSE POST HYDRANT TO BE INSTALLED AT THE FOLLOWING LOCATIONS:

ITEM	ITEM / DESCRIPTION	NOTES
1	OPERATING SCREW	
2	TOP CAP	
3	SIDE CAP	
4	TIP STICK	
5	3-1/2" FBE COATED STEEL PIPE	
6	DRAIN HOLE	
7	COUPLING	
8	INLET VALVE BODY	BY OTHERS
9	UNDISTURBED EARTH	BY OTHERS
10	VALVE BOX	BY OTHERS
11	THRUST BLOCKS	BY OTHERS
12	CRUSHED ROCK	BY OTHERS
13	HYDRANT SHUT-OFF VALVE	BY OTHERS

	INITIALS	DATE
DRAWN	SMS	05/11/17
APPROVED	CEL	05/11/17
MODIFIED	SMS	06/26/18



2511 NORTH 9TH STREET
ST. LOUIS, MO 63102
1-800-231-3990
FAX 314-231-2820
www.hydrants.com

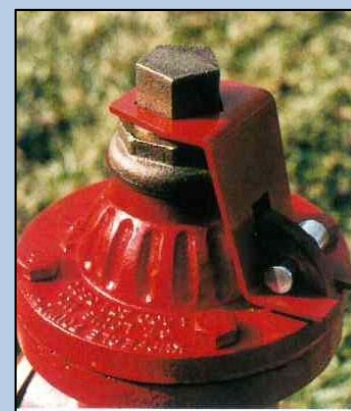
DD/MM/YY	ISSUED FOR REFERENCE	#2 ECLIPSE POST HYDRANT



EVERY HYDRANT MARKED WITH "OPEN" ARROW AND TOLL-FREE NUMBER



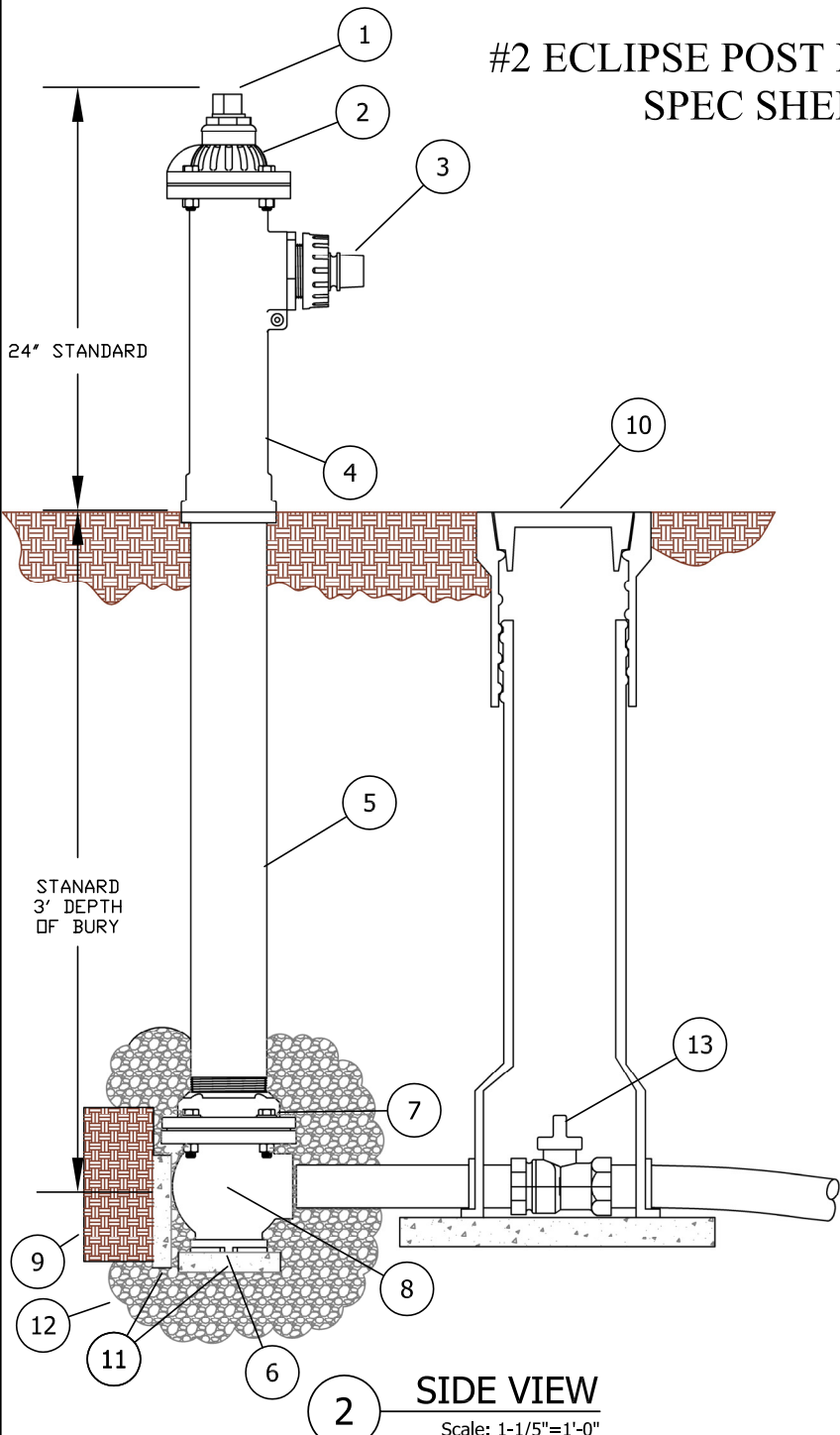
HANDWHEEL OPTION



LOCKING WRENCH OPTION

800-231-3990
www.hydrants.com

#2 ECLIPSE POST HYDRANT SPEC SHEET



2 SIDE VIEW
Scale: 1-1/5"=1'-0"

#2 ECLIPSE POST HYDRANT SHALL BE SELF-DRAINING, NON-FREEZING, COMPRESSION TYPE WITH 2-3/16" MAIN VALVE OPENING. INLET CONNECTION SHALL BE (2" FIP, 2-1/2" FIP, 3" FIP, 2" MJ, 3" MJ OR 4" MJ). OUTLET SHALL BE (1-1/4", 1-1/2", 2" OR 2-1/2" IP OR NST). STANDARD DEPTH OF BURY IS 3'.

ALL WATER FLOW SHALL PASS THRU A 3-1/2" FBE COATED STEEL PIPE AND CAST IRON TOP STOCK WATERWAY.

ALL WORKING PARTS SHALL BE SERVICEABLE FROM ABOVE GROUND WITH NO DIGGING OR REPLACEMENT NEEDED.

HYDRANT SHALL BE SET IN 4 CUBIC FEET OF CRUSHED STONE TO ALLOW FOR PROPER DRAINAGE OF HYDRANT. RECOMMENDATION OF THE AWWA SHOULD BE FOLLOWED WHEN INSTALLING THE HYDRANT.

THE #2 ECLIPSE POST HYDRANT AS MANUFACTURED BY THE KUPFERLE FOUNDRY, ST. LOUIS MO. 63102 OR APPROVED EQUAL.

NOTES:

THE #2 HYDRANT

INLET SHALL BE: _____

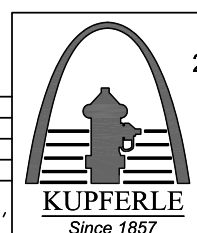
OUTLET SHALL BE: _____

#2 ECLIPSE POST HYDRANT TO BE INSTALLED AT THE FOLLOWING LOCATIONS:

ITEM	ITEM / DESCRIPTION	NOTES
1	OPERATING SCREW	
2	TOP CAP	
3	SIDE CAP	
4	TOP STOCK	
5	3-1/2" FBE COATED STEEL PIPE	
6	DRAIN HOLE	
7	COUPLING	
8	INLET VALVE BODY	
9	UNDISTURBED EARTH	BY OTHERS
10	VALVE BOX	BY OTHERS
11	THRUST BLOCKS	BY OTHERS
12	CRUSHED ROCK	BY OTHERS
13	HYDRANT SHUT-OFF VALVE	BY OTHERS

DD/MM/YY	ISSUED FOR REFERENCE
DATE	STATUS / REVISION

	INITIALS	DATE
DRAWN	SMS	05/11/17
APPROVED	DCL	05/11/17
MODIFIED	SMS	06/26/18



2511 NORTH 9TH STREET
ST. LOUIS, MO 63102
1-800-231-3990
FAX 314-231-2820
www.hydrants.com

#2 ECLIPSE POST HYDRANT CUT SHEET

(2" FIP INLET, STANDARD TOP STOCK, 2-1/2" NST OUTLET SHOWN)
NOTE 4

PARTS LIST

ITEM	QTY	PART NUMBER	DESCRIPTION	NOTES
1	4	1/2W	1/2" STRUCTURAL BOTTOM WASHER	
2	2	2OR	O-RING FOR PLUNGER STEM	C,K
3	3.71	3/4GAL	3/4" GALVANIZED OPERATING ROD	B,C
4	1	487-H	NEW STYLE TOP STOCK	C,K,L
5	2.67	4FBE	3-1/2" FBE COATED STEEL PIPE	B,M
6	1	501A	TOP SCREW (1-1/2" PENT)	
7	1	511	CONNECTING NUT	C
8	1	521	SEAT RING	C
9	1	537-P	NEW STYLE PLUNGER TOP	C,K
10	1	539L2	PLUNGER STEM	K
11	1	539W	S.S. PLUNGER WASHER	K
12	1	541	SEAT RUBBER	C,K
13	1	571-A	IRON BOTTOM (2" IP)	J,K
14	1	581-C	NEW STYLE TOP CAP	C
15	1	592-A	2-1/2" NST SIDE CAP	K
16	1	595	CHAIN ASSEMBLY	A
17	1	611	WASTE TUBE	K
18	4	628A-B	S.S. TOP CAP BOLT	C
19	4	629A-B	S.S. COUPLING BOLT	
20	8	629A-N	1/2" S.S. HEX NUT	C
21	2	668	OPERATING SCREW O-RING	C
22	1	669	PACKING NUT GASKET	C
23	1	678	FLANGE COUPLING FOR DUCTILE	C
24	1	716	2-1/2" NST BRASS NOZZLE	C,J
25	1	739	PACKING NUT (1-1/2" PENT)	
26	1	95G	HOUSING O-RING	C
27	3	A16	SIDE CAP GASKET	C,K
28	1	A19	WASTE TUBE O-RING	C,K
29	1	A2-NS	NEW STYLE TOP CAP GASKET	C
30	1	A8	NEW STYLE BOTTOM GASKET	C,K

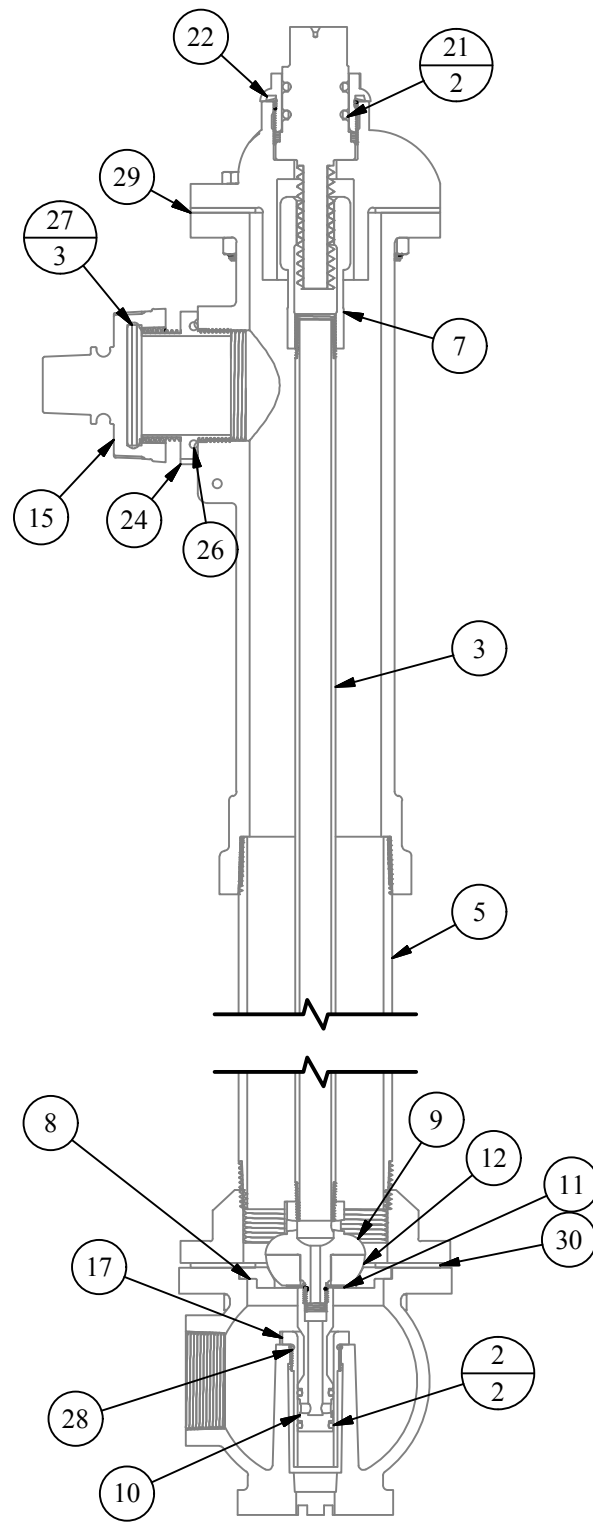
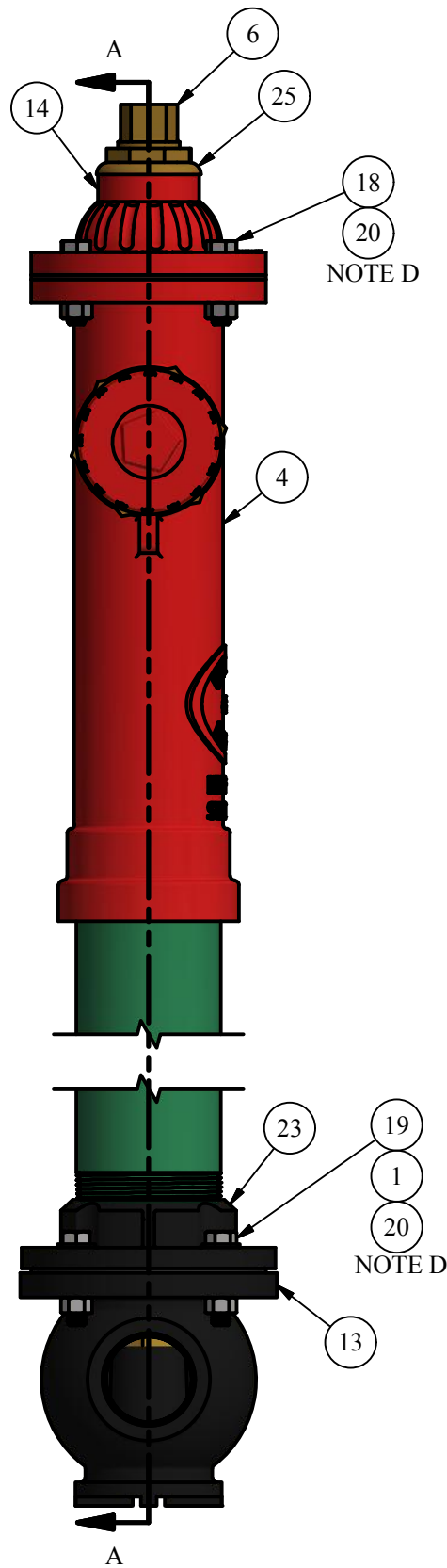
OPTIONS / REPAIR PARTS LIST

31	1	1 1/16SR	SOLID OPERATING ROD	A,C
32	1	3/4C	COUPLING FOR OPERATING ROD	A,C
33	1	3/4SSP	SS OPERATING ROD	A,C
34	1	492	WRENCH FOR 1-1/4" PENT	C
35	1	492VP	VANDAL PROOF WRENCH	C
36	1	501	TOP SCREW 1-1/4" PENT	A,C
37	1	503-VP	VANDAL PROOF SCREW	C
38	1	621	PACKING NUT (1-1/4" PENT)	A,C
39	1	667	HANDWHEEL - 1-1/2" PENT	C
40	1	674	NEW STYLE LOCKING WRENCH	C
41	1	700	WRENCH FOR 1-1/2" PENT	C
42	1	77M	TOP SCREW O-RING	A,C
43	1	77MG	PACKING NUT GASKET	A,C

REPAIR KITS

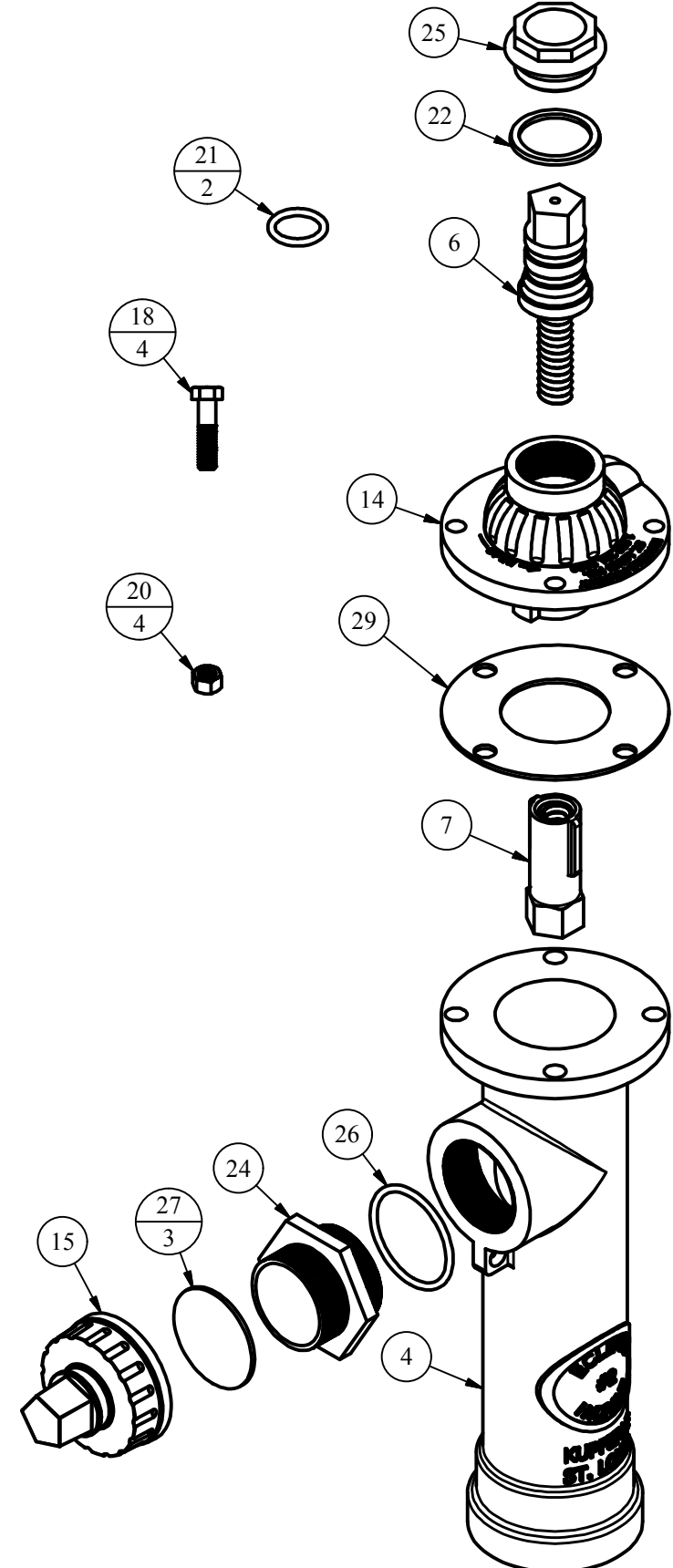
PART NUMBER	DESCRIPTION	PARTS INCLUDED
X475-6	EXTENSION - FIRST 6"	3DUC EXTERIOR PIPE (0.5), 3/4GAL OPERATING ROD (0.5), 3/4C COUPLING (1), 661 COUPLING (2), 629A-B BOLT (4), 629A-N NUT (4), A8 GASKET (1)
X475-XX	EXTENSION - EACH ADDITIONAL 6"	3DUC EXTERIOR PIPE (0.5), 3/4GAL OPERATING ROD (0.5)
X501	1-1/4" PENT TOP SCREW COMPLETE	501 TOP SCREW 1-1/4" PENT (1), 77M O-RING (1)
X501A	1-1/2" PENT TOP SCREW COMPLETE	501A TOP SCREW 1-1/2" PENT (1), 668 O-RING (2)
X503VP	VANDAL PROOF SCREW COMPLETE	503-VP VANDAL PROOF SCREW (1), 668 O-RING (2)
X581C	IRON TOP CAP COMPLETE	581-C "NEW STYLE" TOP CAP (1), A2-NS GASKET (1), 628A-B BOLT (4), 629A-N NUT (4)
X581C-1	NEW STYLE BONNET COMPLETE	581-C TOP CAP (1), 501A TOP SCREW (1), 668 O-RING (2), 739 PACKING NUT (1), 669 GASKET (1), 511 CONNECTING NUT (1), A2-NS GASKET (1), 628A-B BOLT (4), 629A-N NUT (4)
X621	1-1/4" PENT PACKING NUT WITH GASKET	621 PACKING NUT (1), 77MG GASKET (1)
X739	1-1/2" PENT PACKING NUT WITH GASKET	739 PACKING NUT (1), 669 GASKET (1)

NOTE	DESCRIPTION
A	NOT SHOWN
B	PIPE LENGTH DEPENDENT ON DEPTH OF BURY
C	SOLD AS REPLACEMENT PART
D	BOLT ASSEMBLY USED ON ALL SIMILAR HOLES/BRACKETS
J	SEVERAL OTHER INLET/OUTLET CONFIGURATIONS ARE OFFERED. SEE NOTES K & L
K	SEE #2, #8, #85 GUIDE FOR INLET, NOZZLE, CAP OPTIONS, & PLUNGER HISTORY SHEET FOR ASSEMBLY VIEWS AND REPLACEMENT PART INFORMATION
L	SEE #2 GUIDE FOR TOPS STOCK OPTIONS AND OLD STYLE PARTS REPAIR KITS
M	BARREL PIPE FUSION BONDED EPOXY COATED, BOTH INTERNALLY AND EXTERNALLY

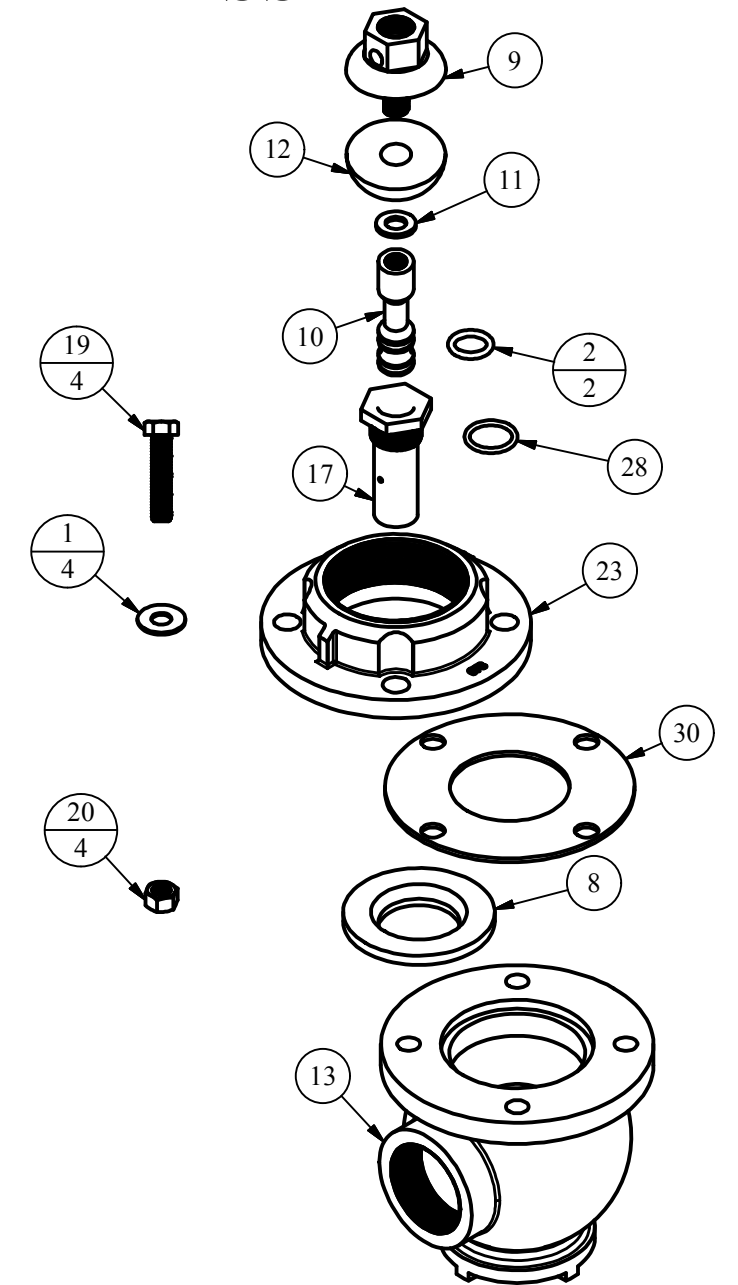


SECTION A-A
CENTER SECTION VIEW

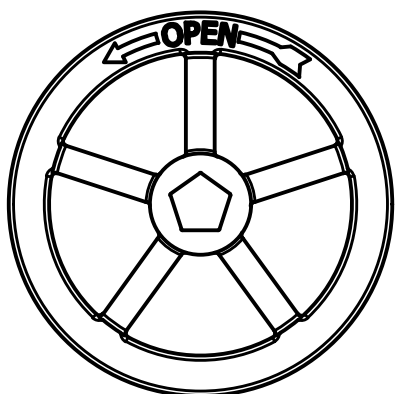
TOP STOCK PART ASSEMBLY



VALVE PART ASSEMBLY



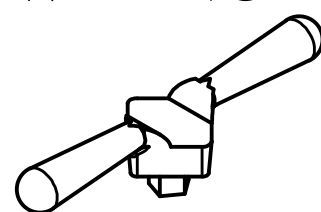
667
HANDWHEEL



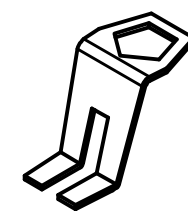
503-VP
VANDALPROOF
SCREW



492VP
VANDALPROOF
WRENCH



674
LOCKING
WRENCH



LEGEND

- (X) → STANDARD TAG
- (X/Y) → TAG WITH Y QUANTITY

DISCLAIMER:
THIS DRAWING IS THE PROPERTY OF THE KUPFERLE
FOUNDRY COMPANY. IT IS NOT TO BE USED OR
DUPLICATED WITHOUT THE PERMISSION OF THE OWNER.

DRAWN	SMS	5/2/2017
CHECKED	DCL	11/14/2017
MODIFIED		

SIZE	SCALE
C	1/5

DWG NO	#2 Cut_Rev0
--------	-------------



2511 NORTH 9TH ST. ST. LOUIS, MO 63102 1-800-231-3990	SHEET	REV
1 OF 1	1	0